

DYE PENETRANT INSPECTION PROCESSES

2008-CRACK DETECTION KIT CLEANER – PENETRANT – DEVELOPER

Description :

2008-CRACK DETECTION KIT is made up of three specially designed products for controlling and detecting cracks in metal, ceramic and generally in similar non-absorbent surfaces.

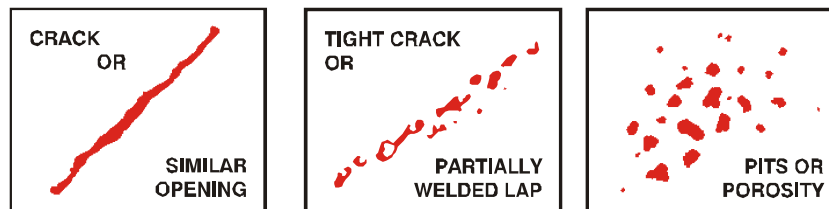
2008-CRACK DETECTION KIT meets the requirements of **MIL-I-25135, SAE – AMS – 2644, DIN 54152 and EN – ISO 3452-2 TYPE II C e** in accordance with **EN 571-1**.

It is safe to all metals including aluminum, zinc, tin and all reactive metals.

Application :

Clean parts thoroughly using **Cleaner**. Ensure that all oil, grease, dirt etc. are removed. Dry thoroughly. Spray **Penetrant** on the surface to be inspected. Allow penetrant to act at a minimum of 10 minutes. Wipe off all the excess penetrant using dry rags. Dampen a rag with **Cleaner** and remove remaining surface penetrant smoothly. Let surface dry. Shake well before using the **Developer** can. Spray a thin film of developer on the surface. Two coats are sufficient. As the developer dries the bright red penetrant will bleed into the developer showing surface discontinuities (cracks, pits etc.).

Control and evaluation of the results



Warning :

To avoid blockage of developer's can valve after using, turn upside – down the can and spray until clear “gas” comes out.

Packaging :

Each kit consists of 3 sprays of 400 ml each. Available in boxes of 12 pieces (4 sets).